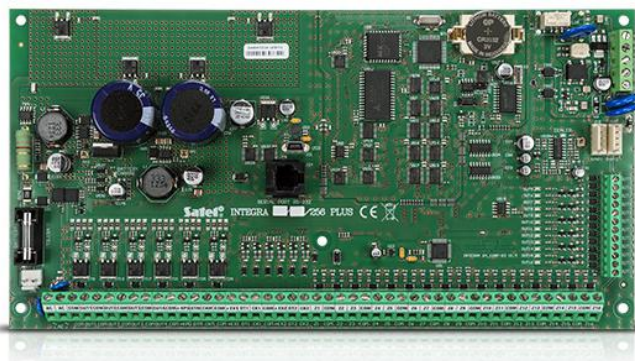


# INTEGRA 256 Plus

ALARM CONTROL PANEL MAINBOARD, FROM 16 TO 256 ZONES AND OUTPUTS, COMPLIANT WITH THE GRADE 3 STANDARD

Owing to their full compliance with the EN50131 Grade 3 requirements, the **INTEGRA Plus** control panels will be a perfect solution for implementing advanced security systems in facilities with a particularly high risk of burglary, e.g. jewelry shops or public utility buildings. These control panels feature extended functionality, which enables them to be used to implement access control systems or even smart building systems.

- full compliance with the EN50131 series standards for Grade 3 devices
- built-in advanced 2 A+1.5 A power supply with extended diagnostic functions
- support for up to 256 zones with a possibility to program parametric resistance and operate 3EOL lines
- USB port for programming by means of a PC
- possibility to divide the system into 32 partitions and 8 objects
- expandability up to 256 programmable outputs
- communication buses to connect keypads and expansion modules
- integrated phone communicator with reporting, voice messaging and remote control functions
- system operation by means of touchscreen keypads, LCD keypads, partition keyboards, keyfobs and proximity cards or remote control via computer or mobile phone
- 64 independent automatic control timers
- access control and home automation functions
- event log for 24,575 events, with a printout function
- support for up to 240+8+1 users
- firmware update capability by means of a computer
- option of not reporting possible problems with connecting to the SATEL server as a failure



## TECHNICAL DATA

Installer-defined text messaged	64
Extender circuits	up to 64
Environmental class according to EN50130-5	II
Voice messages	32
Communication buses	1+2
Maximum number of programmable inputs	256
Maximum number of programmable outputs	256
Maximum humidity	93±3%
Maximum current consumption from the battery	200 mA
Maximum current consumption from the 230V network	400 mA
Maximum battery charging current	1500 mA
Keypads	up to 8
Weight	320 g
Battery cut-off voltage (±10%)	10,5 V
Power supply output voltage	10,5...14 V DC
Supply voltage (±15%)	20 V AC, 50-60 Hz
Battery failure voltage threshold (±10%)	11 V
Telephone numbers for notification (voice/PAGER + SMS)	16+16
Carrying capacity of the +EX1 and +EX2 outputs (±10%)	3000 mA
Low current programmable outputs rating	50 mA
High current programmable outputs rating	3000 mA
Carrying capacity of the +KPD output (±10%)	3000 mA
Event log	24575
Objects	8
Current consumption from the 230V network in standby	135 mA
Current consumption from battery - standby	130 mA
Security grade according to EN 50131	Grade 3
Partitions	32
Timers	64
Users + Administrators	240+8
Programmable wired inputs	16
Power supply current efficiency (supplying devices + charging batteries)	2000 + 1500 mA
Programmable wired outputs	16
Supplying outputs	3
Board dimensions	264 x 134 mm
Operating temperature range	-10...+55 °C
Recommended transformer type	75 VA